

PRODUCT BRIEF

产品简介

The product is designed to standard IEC/EN61984 and tested to IEC/EN60512. It is approved to certification of CE, China Compulsory Certificate and passed the RoHS test by SGS.

The product is applied to the circuits of various instruments and electrical controllers

本产品依据IEC/EN61984标准设计，测试标准IEC/EN60512。已获得了中国CCC认证，欧盟CE认证，通过了SGS测试，符合RoHS指令的要求。

本产品适用于各种仪器，电控设备的电路连接。

TECHNICAL DATA

技术参数

Operating Temperature 产品工作温度	Lower limit -40℃; Upper limit +100℃ 下限 -40℃; 上限 +100℃
Relative Humidity 相对湿度	95% at 40 ± 2℃ 40 ± 2℃达95%
Frequency 频率	50HZ ~ 60HZ
Vibration 振动	10 - 500HZ, Accelerate 100m/s ² 振频10 - 500HZ; 加速度 100m/s ²
Shock 碰撞	Frequency 40 - 80cycles/minute, Acceleration 250m/s ² 频率 40 - 80次/分; 加速度达 250m/s ²
Overvoltage Category 过电压类别	II
Insulation Resistance 绝缘电阻	Normal > 5000 MΩ 常温状态 > 5000 MΩ
	Damp heat > 100 MΩ 湿热状态 > 100 MΩ
Insulating Material Flammability 绝缘材料阻燃等级	UL94-V0
Degree of Pollution 污染等级	2
Matings 机械寿命	>500 matings >500次

Contact Rated Current, Contact Resistance, Wire Gauge (See Table Below)

接触对的额定电流、接触电阻、导线截面积（见下表）

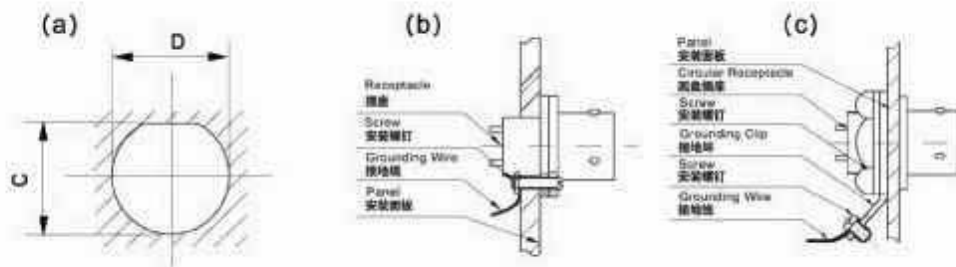
Contact Diameter 接触对直径(mm)	Rated Current 额定电流(A)	Contact Resistance 接触电阻(mΩ)	Wire Gauge 尾端可焊导线截面积(mm ²)
φ0.8	3	≤10	≤0.5
φ1	5	≤5	≤0.78
φ1.5	10	≤2.5	≤1.75
φ1.6	13	≤2	≤2
φ2.5	25	≤1	≤4.9

MOUNTING & USAGE

安装与使用

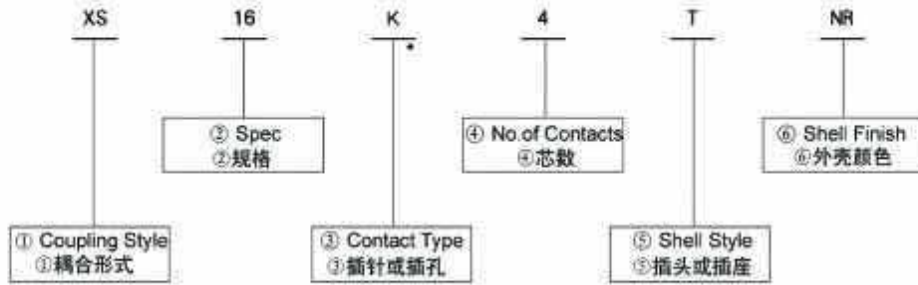
1. For the small contact in 0.8-2.5mm, electrical iron power shall not be overlarge the range of 25W-35W as the connector is welded and the time shall be controlled between 2 sec and 3 sec.
2. Thermal shrinkable sleeve must be used at weld joint for insulation.
3. When connector with cable clamp (P), the clamp shall be adjusted to proper tightness.
4. Fixed circular connector(Y). The hole should be cut in straight edge on the top as following drawing (a) shows, when drilling on panel, and C<D0.5mm.
5. As operating voltage is larger than 50V(AC virtual value), shell shall be grounded as figure (b,c) below.

- 1、鉴于本连接器体积较小，接触对直径在φ0.8~φ2.5mm,所以焊接时使用的电烙铁功率不宜过大，一般采用25W~35W的电烙铁，而且电烙铁停留在焊接点的时间不宜过久，应控制在2~3秒之间。
- 2、焊接电缆线后，必须在焊接处加套热缩套管以保证绝缘。
- 3、出线端为夹固电缆式（P）的一片夹紧环，请务必调整至夹紧电缆线。
- 4、圆盘法兰固定式插座（Y），在安装开孔时，请务必按照本页下列图示a将上部截平，且C<D 0.5mm。
- 5、当产品工作电压大于50V（交流有效值），请按下图（b、c）示例，外壳接地。



PART NUMBER EXPLANATION

型号规格标示



① Coupling Style
耦合形式

<p>X—Thread Coupling X—螺纹式连接</p>	NR	
<p>XS—Push-Pull Coupling XS—推拉式快速连接</p>	BL	

② Spec
规格

Four Specs of 10, 12, 16 & 18 (Unit: mm)
10, 12, 16, 18四种规格。(单位: mm)

③ Contact Type
插针或插孔

For Oversea order: P—Pin S—Socket
国内订货: J—插针 K—插孔

④ No. of Contacts
芯数

<p>XS 10 — 2, 3, 4, 5 X. xS 12 — 2, 3, 4, 5, 6, 7 X. xS 16 — 2, 2a, 3, 3a, 3b, 4, 4a, 5, 5a, 7, 8, 9, 12 XS 18 — 3, 6, 8, 14</p>	<p>见5-7页排布图 See Page 5-7 Contact Arrangement</p>
--	--

③ Shell Style
插头或插座

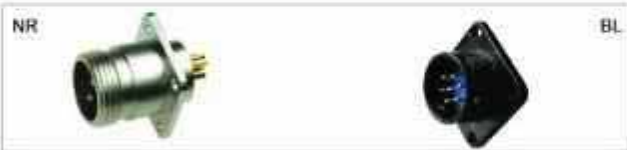
Plug: P--With Cable Clamp Outlet
插头: P—夹固电缆式



T--With Rubber Boot Outlet
T—橡胶护套式



Receptacle: A--Square Flange Mounting
插座: A—方形法兰固定安装式



Y--Circular Mounting
Y—圆形法兰固定安装式



④ Shell Finish
外壳颜色

BL--Black

BL—黑色

NR--Nonreflective Nickel

NR—砂镍

★ Note: Overseas order, P refers to pin, S refers to socket

EXAMPLE:

① X12S5P-BL

X12P5A-BL

Abbr.X12S5P/P5A-BL

- Explanation:
- Thread Coupling; Spec12mm;
 - 5 Sockets Cable Clamp Outlet Plug
 - 5 Pins Square Flange Mounting Receptacle
 - Black Shell

② XS16P5P-NR

XS16S5YP-NR

Abbr.XS16P5P/S5YP-NR

- Explanation:
- Push-Pull Coupling; Spec16mm;
 - 5 Pins Cable Clamp Outlet Plug
 - 5 Sockets Free receptacle With Cable Clamp Outlet
 - Nonreflective Nickel Shell

举例:

① X12K5P-BL

X12J5A-BL

缩写: X12K5P/J5A-BL

- 解释:
- 耦合形式为螺纹;规格12; 5芯插孔的夹固电缆式插头
 - 5芯插针的方方法兰插座, 固定安装式
 - 外壳颜色黑色

② XS16J5P-NR

XS16K5YP-NR

缩写: XS16J5P/K5YP-NR

- 解释:
- 耦合形式为推拉快速插拔;规格16; 5芯插针的夹固电缆式插头
 - 5芯插孔的移动式圆形插座
 - 外壳颜色砂镍







CONTACTS ARRANGEMENT
芯数排布图

View from mating face of pin contacts (P)










绝缘体端面为插针 (J)

Spec 规格	XS 10			
Contacts No. 芯数	2	3	4	5
Contacts Arrangement 排列图				
Diameter Of Contacts X Qty 接触对直径 × 数量	φ 1.0 × 2	φ 1.0 × 3	φ 0.8 × 4	φ 0.8 × 5
Rated Voltage 额定电压	250V	250V	200V	125V
Withstand Voltage 耐压	1500V	1500V	1000V	1000V

View from mating face of pin contacts (P) 绝缘体端面为插针 (J)

Spec 规格	X, XS 12					
Contacts No. 芯数	2	3	4	5	6	7
Contacts Arrangement 排列图						
Diameter Of Contacts X Qty 接触对直径·数量	$\phi 1.6 \times 2$	$\phi 1.0 \times 3$	$\phi 1.0 \times 4$	$\phi 1.0 \times 5$	$\phi 1.0 \times 6$	$\phi 1.0 \times 7$
Rated Voltage 额定电压	250V	250V	200V	180V	125V	125V
Withstand Voltage 耐压	2000V	2000V	1500V	1500V	1000V	1000V

View from mating face of pin contacts (P) 绝缘体端面为插针 (J)

Spec 规格	X, XS 16				
Contacts No. 芯数	2	2a	3	3a	3b
Contacts Arrangement 排列图					
Diameter Of Contacts X Qty 接触对直径·数量	$\phi 1.5 \times 2$	$\phi 2.5 \times 2$	$\phi 1.0 \times 3$	$\phi 1.5 \times 3$	$\phi 2.5 \times 3$
Rated Voltage 额定电压	250V	250V	250V	250V	250V
Withstand Voltage 耐压	2000V	2000V	2000V	2000V	2000V
Spec 规格	X, XS 16				
Contacts No. 芯数	4	4a	5	5a	
Contacts Arrangement 排列图					
Diameter Of Contacts X Qty 接触对直径·数量	$\phi 1.0 \times 4$	$\phi 1.5 \times 4$	$\phi 1.0 \times 5$	$\phi 1.0 \times 2$ $\phi 1.5 \times 3$	
Rated Voltage 额定电压	250V	250V	250V	1, 2 250V 3, 4, 5 400V	
Withstand Voltage 耐压	2000V	2000V	2000V	2000V	

Spec 规格	X, XS 16			
Contacts No. 芯数	7	8	9	12
Contacts Arrangement 排列图				
Diameter Of Contacts X Qty 接触对直径 × 数量	$\phi 1.0 \times 7$	$\phi 1.0 \times 8$	$\phi 1.0 \times 9$	$\phi 1.0 \times 12$
Rated Voltage 额定电压	250V	250V	200V	160V
Withstand Voltage 耐压	2000V	2000V	1500V	1500V

View from mating face of pin contacts (P) 绝缘体端面为插针 (J)

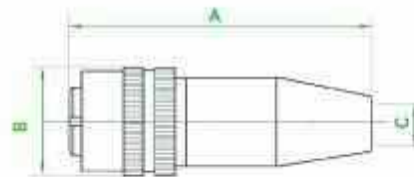
Spec 规格	XS 18			
Contacts No. 芯数	3	5	8	14
Contacts Arrangement 排列图				
Diameter Of Contacts X Qty 接触对直径 × 数量	$\phi 2.5 \times 3$	$\phi 1.6 \times 6$	$\phi 1.6 \times 3$ $\phi 1.0 \times 5$	$\phi 1.0 \times 14$
Rated Voltage 额定电压	320V	320V	400V(电源)	200V
Withstand Voltage 耐压	2000V	2000V	2000V	1500V

X & XS PLUG FIGURE

X、XS插头外形尺寸

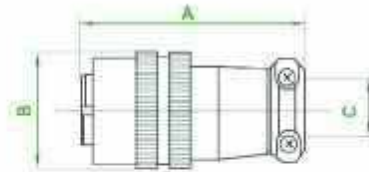
Unit: 单位: mm

Spec 规格	A	B	C
XS10	46 ± 1	$\phi 14$	$\phi 5.5$
X12	51.3 ± 1	$\phi 17$	$\phi 6.5$
XS12			
X16	61.8 ± 1	$\phi 22.5$	$\phi 8$
XS16			
XS18	67.7 ± 1	$\phi 24.5$	$\phi 12$



Unit 单位: mm

Spec 规格	A	B	C
XS10	29 ± 1	∅14	∅5.5
X12	33.8 ± 1	∅17	∅6.5
XS12			
X16	40.8 ± 1	∅22.5	∅8
XS16			
XS18	43.7 ± 1	∅24.5	∅12



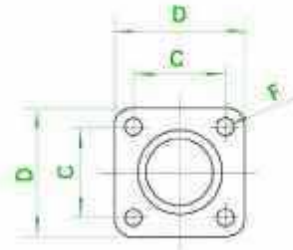
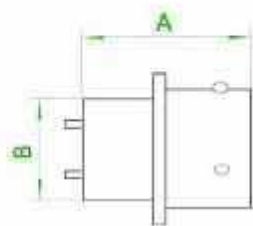
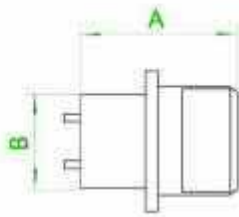
X & XS RECEPTACLE AND MOUNTING FIGURE

X、XS插座外形、安装开孔尺寸

Square Flange Receptacle 方形法兰插座

▲ X-A

▲ XS-A

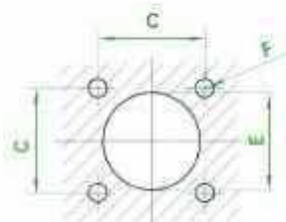


Mounting Hole Figure

安装开孔尺寸

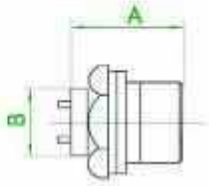
Unit 单位: mm

Spec 规格	A	B	C	D	E	F
XS10	19	∅10	11 ± 0.1	16	∅10.5	4-∅2.3
X12		∅12	13 ± 0.1	18	∅12.5	4-∅2.3
XS12		∅16	20 ± 0.1	26	∅16.5	4-∅3.2
X16		∅18	22 ± 0.1	28	∅18.5	4-∅3.2
XS16						
XS18						

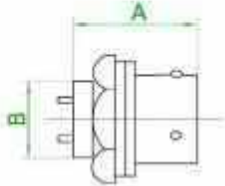


Circular Receptacle
圆形法兰插座

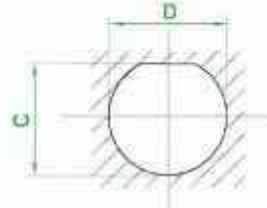
▲ X-Y



▲ XS-Y



Mounting Hole Figure
安装开孔尺寸

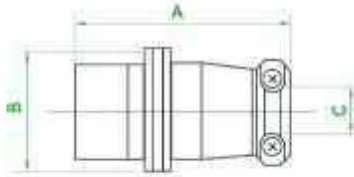


Unit 单位: mm

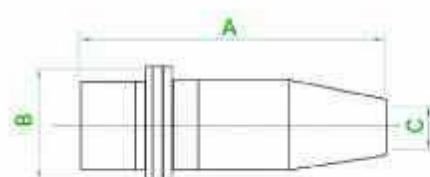
Spec 规格	A	B	C	D
XS10	19	M10 × 0.75	9.5	∅10
X12		M12 × 0.75	11.5	∅12
XS12				
X16		M16 × 0.75	15.5	∅16
XS16				
XS18				

Free Receptacle With Cable Clamp
移动式插座—夹固电缆

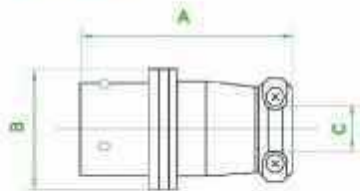
▲ X-Y2



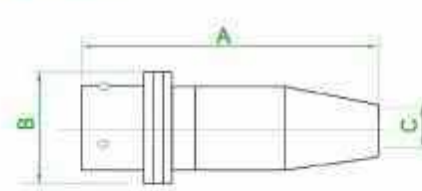
▲ X-YT



▲ XS-Y2



▲ XS-YT



Unit 单位: mm

Spec 规格	A	B	C
XS10	29 ± 1	φ15	φ5.5
X12	33.8 ± 1	φ18	φ6.5
XS12			
X16	40.8 ± 1	φ23	φ8
XS16			
XS18	43.7 ± 1	φ25	φ12

Unit 单位: mm

Spec 规格	A	B	C
XS10	48 ± 1	φ15	φ5.5
X12	51.3 ± 1	φ18	φ6.5
XS12			
X16	61.8 ± 1	φ23	φ8
XS16			
XS18	67.7 ± 1	φ25	φ12

MATING & UNMATING 连接与分离示意图

